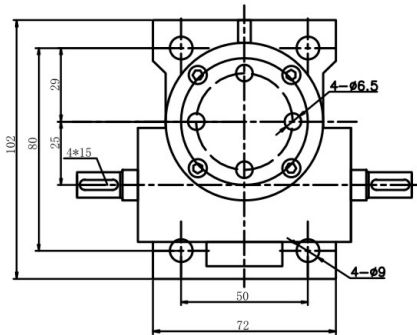
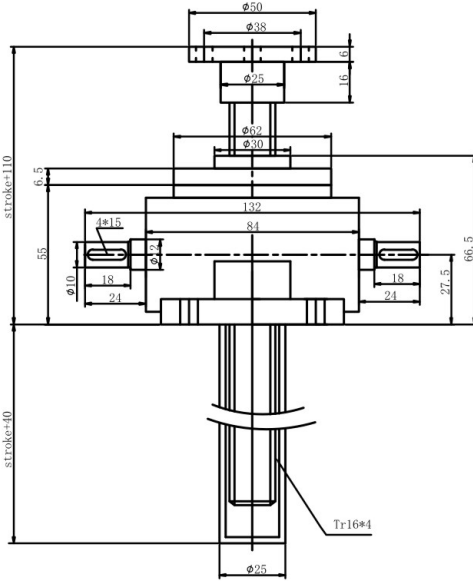




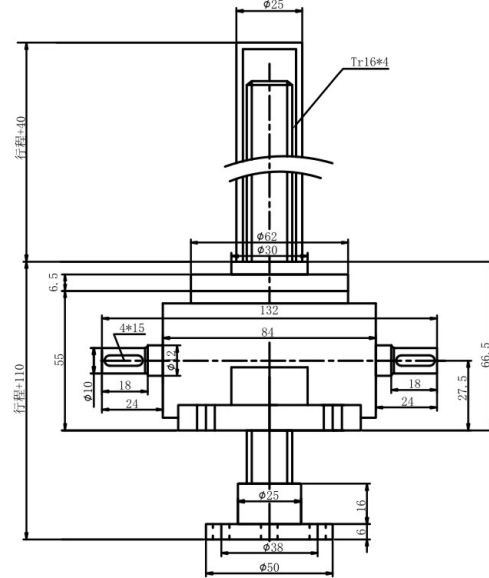
LINEAR MOTION

SWL 0.5 type 1 structure

1A Upright translating screw

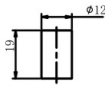


1B Inverted translating screw

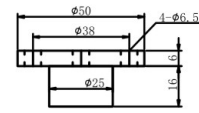


screw head optional

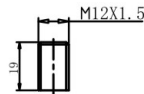
Type I



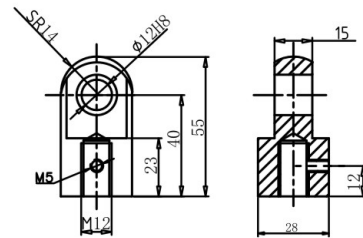
Type II



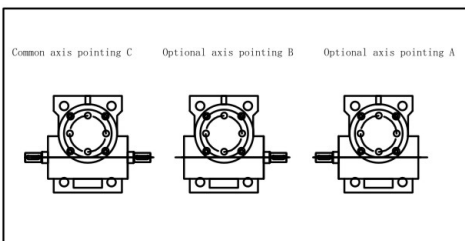
Type III



Type IV



Shaft Direction

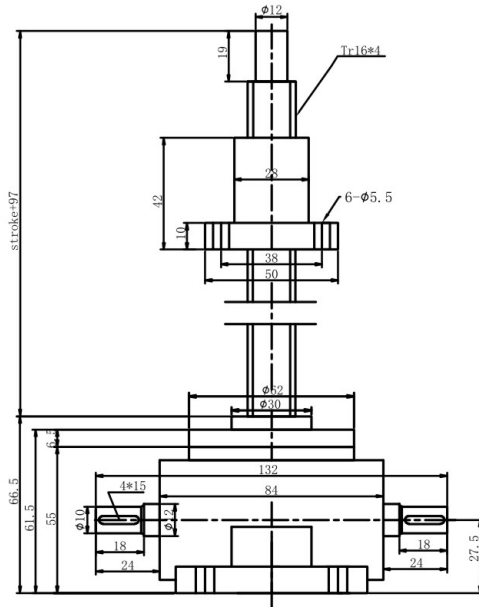


model	SWL0.5		
maximal load kN	5		
screw diameter+lead mm	Tr16x4		
ratio	I	II	III
	5	10	20
amount of lift per revolution mm	0.8	0.4	0.2
efficiency	0.23	0.17	0.12
max. input power kW	0.25	0.18	0.12
full load max.start torque N.m	4.2	2.8	2
non-load torque N.m	0.11		
material of housing	ductile cast iron		

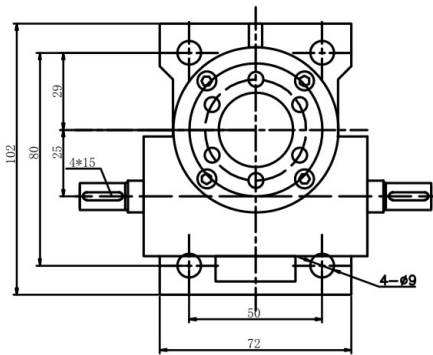
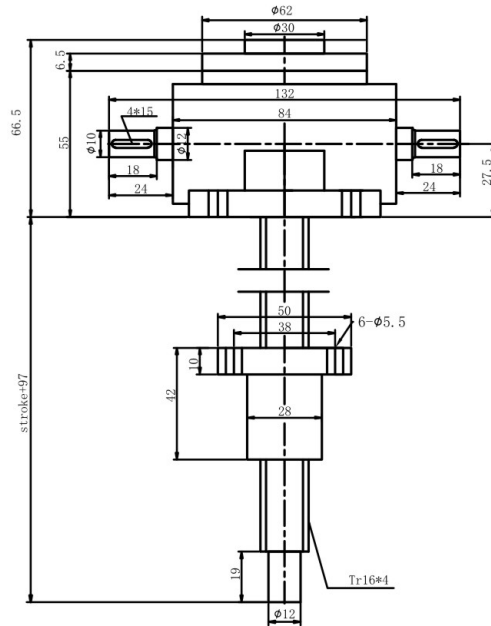


SWL 0.5 type 2 structure

2A Upright rotating screw

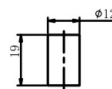


2B Inverted rotating screw

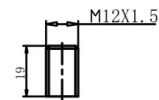


screw head optional

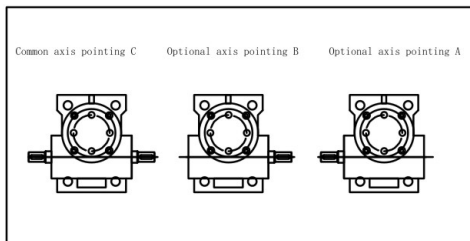
Type I



Type III



Shaft Direction



model	SWL0.5		
maximal load kN	5		
screw diameter+lead mm	Tr16x4		
ratio	I	II	III
	5	10	20
amount of lift per revolution mm	0.8	0.4	0.2
efficiency	0.23	0.17	0.12
max. input power kW	0.25	0.18	0.12
full load max.start torque N.m	4.2	2.8	2
non-load torque N.m	0.11		
material of housing	ductile cast iron		