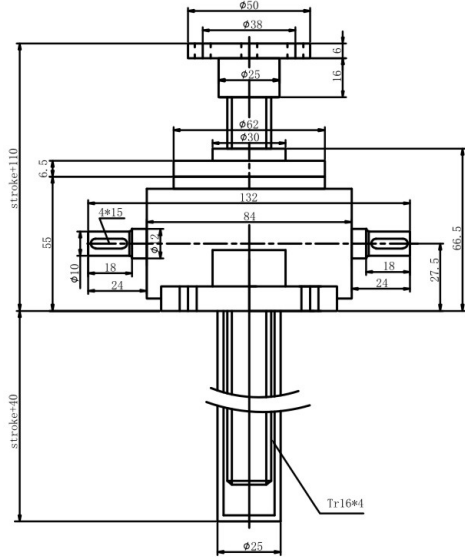




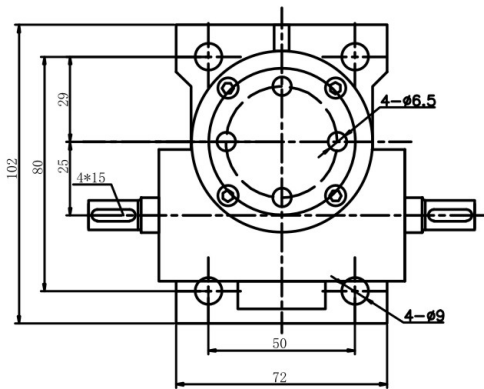
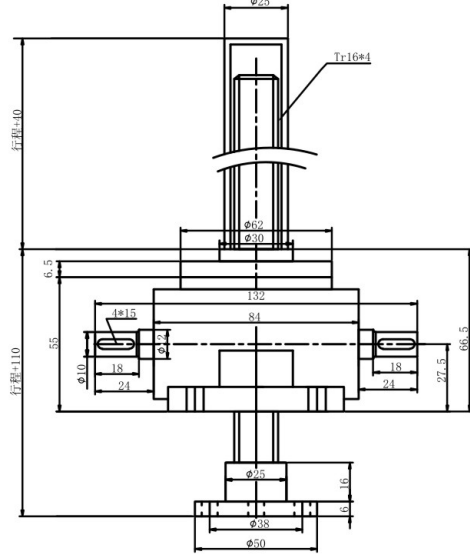
LINEAR MOTION

HK 0.5T type 1 structure

1A Upright translating screw



1B Inverted translating screw

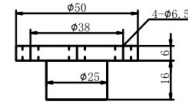


screw head optional

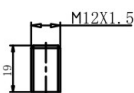
Type I



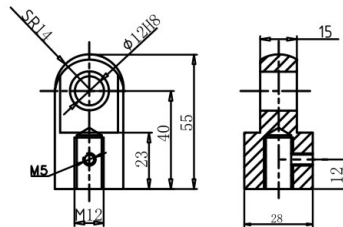
Type II



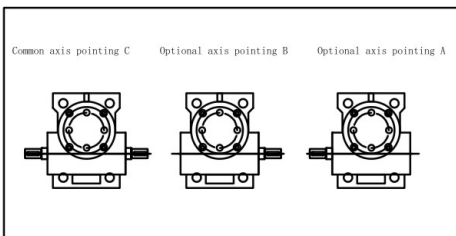
Type III



Type IV



Shaft Direction

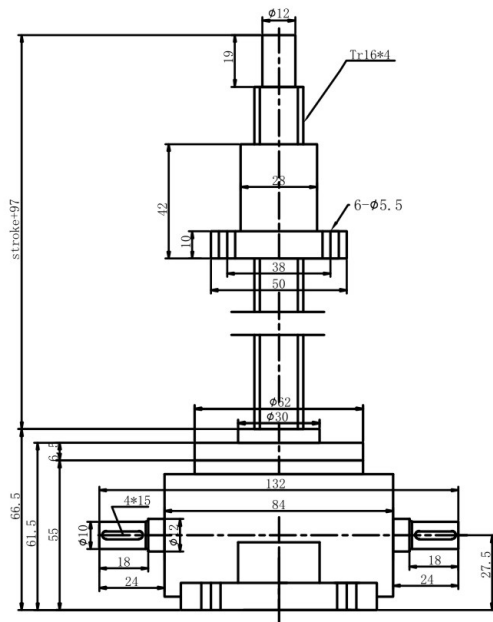


model	HK0.5T			
maximal load	kN	5		
screw diameter+lead	mm	Tr16x4		
ratio	I	II	III	
	5	10	20	
amount of lift per revolution	mm	0.8	0.4	0.2
efficiency		0.23	0.17	0.12
max. input power	kW	0.25	0.18	0.12
full load max. start torque	N.m	4.2	2.8	2
non-load torque	N.m	0.11		
material of housing		ductile cast iron		

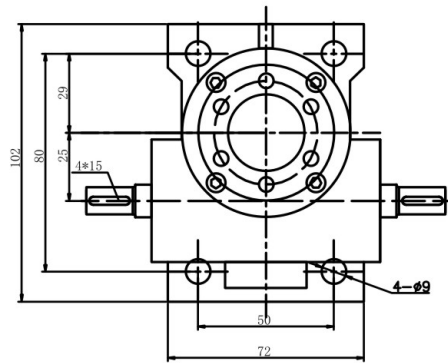
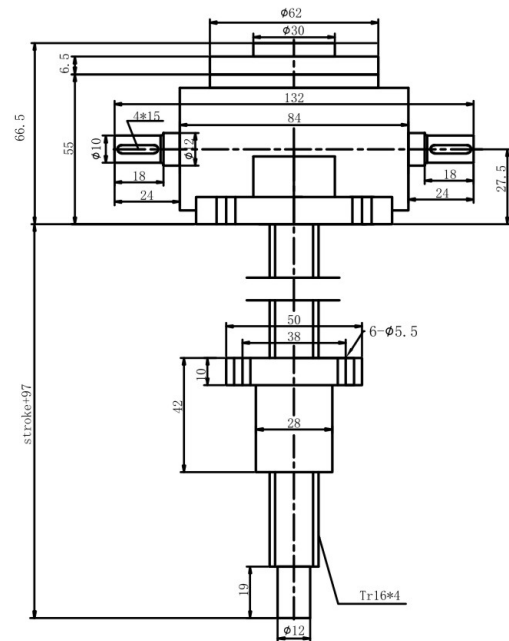


HK 0.5T type 2 structure

2A Upright rotating screw

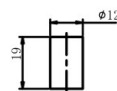


2B Inverted rotating screw

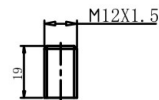


screw head optional

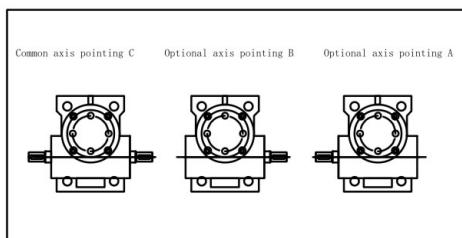
Type I



Type III



Shaft Direction



model	HK0.5T		
maximal load kN	5		
screw diameter+lead mm	Tr16x4		
ratio	I	II	III
	5	10	20
amount of lift per revolution mm	0.8	0.4	0.2
efficiency	0.23	0.17	0.12
max. input power kW	0.25	0.18	0.12
full load max. start torque N.m	4.2	2.8	2
non-load torque N.m	0.11		
material of housing	ductile cast iron		